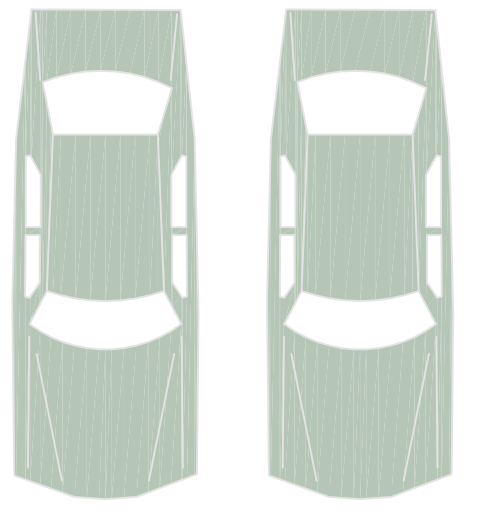
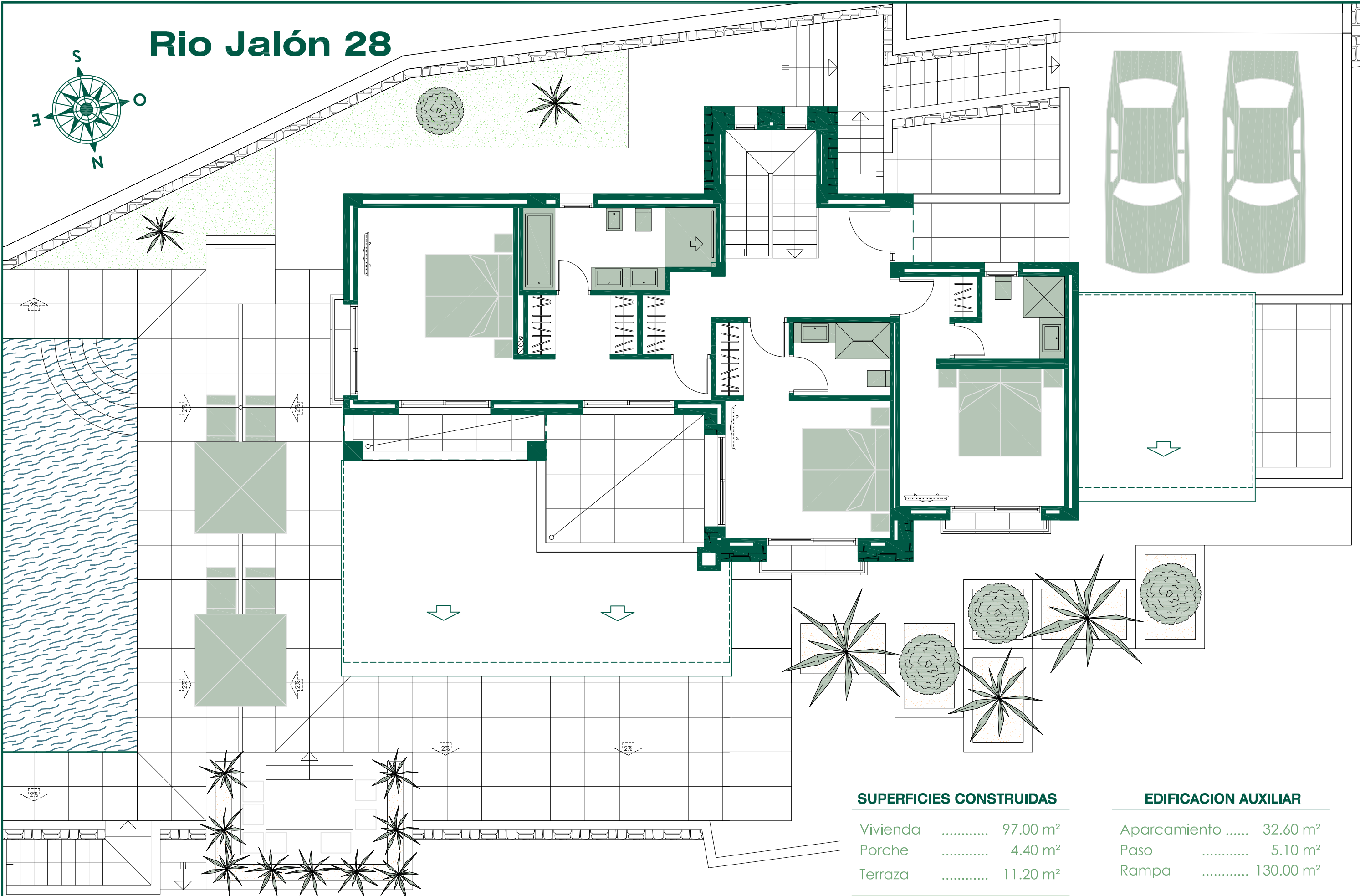
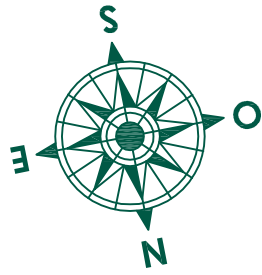


Rio Jalón 28



SUPERFICIES CONSTRUIDAS

Vivienda	97.00 m ²
Porche	4.40 m ²
Terraza	11.20 m ²
TOTAL	101.40 m²

EDIFICACION AUXILIAR

Aparcamiento	32.60 m ²
Paso	5.10 m ²
Rampa	130.00 m ²

