

STAIRCASE 2, FLOOR 1 TO 4, DOOR B

DISTRIBUTION PLAN

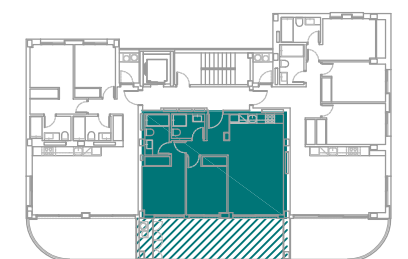


VILLA GIACOMINA

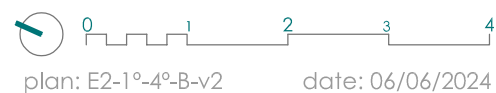
APARTMENTS

STAIRCASE 2 FLOOR 1 TO 4 DOOR B

STAIRCASE 2, FLOOR 1 TO 4, DOOR B	
FLOOR	1 TO 4
DOOR	B
BEDROOMS	2
BUILT AREA APROX	69,17 M ²
BUILT AREA + TERRACE	97,25 M ²
<i>The terraces are calculated to 100%</i>	



FLOOR 1 TO 4



Note: The property reserves the right to modify or change especifications or plants stated above with respect to the end product, as determined by architects.